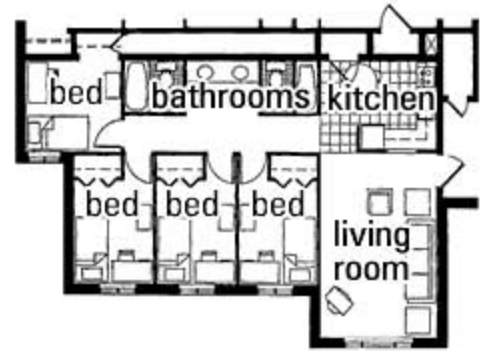


Welcome! We are delighted you are going to be joining us on campus this summer. Below is some information you might find useful. It has been gathered from past participant comments as well as from UF Housing and UF CPET experience.

On-campus housing is in the **Keys Residential Complex**. Each furnished apartment has four bedrooms, a living room, two baths and a kitchen. Each kitchen is equipped with a stove, oven, microwave and a full size refrigerator. Each bedroom has a cable television outlet. Laundry facilities, recreation rooms, a food vending area, and a library are also featured. Linens will be provided. There is no internet access or phone line in the apartment.



The apartments do **not** include a vacuum, television, telephone, computer, alarm clock or clothes hangers. Cooking and eating utensils will need to be supplied by the participant if plans are to cook at the residence facility. Past participant suggested items to bring include: extra-long sheets, a warm bedspread/comforter (in addition to the linens provided), bed-side lamp, bike, coffee pot, comfortable shoes, clothes and shoes for tromping through a wetland, bug spray, and any personal items (i.e. medications). Also, be prepared for Gainesville weather: rain, freezing AC, and blistering heat.

## Keys Residential Complex Amenities

**Keys Complex Office** — The Keys Complex Office is located in the center of the commons. Three full-time university employees staff this office. The office is open 24/7.

**Keys** — A resident may check out the lockout key for their room from the Keys Complex Desk; return within 30 minutes.

- **LOST KEY CHARGES** Room Key - \$72.00, Commons Key - \$25.00, Lockouts - \$8.00

**Keys Complex Library** — The Keys Complex Library is located in the commons. It is a quiet and convenient place for area residents to study. The library is open 24 hours a day. You will need your entrance key to the commons where the library is located.

**Televisions & Study Lounges** — The commons is equipped with a color television. This TV may be used 24 hours a day, seven days a week, but please be considerate of others who may be in the commons.

**Cable TV** — TV cables and connectors for older TVs are available for check out at the Keys Complex Office Desk. You are responsible for these items after checking them out and you must return them to the Area Office desk along with your keys at the time you move from your residence hall.

**Change Machines** — There is a change machine located in the Keys Complex commons by the office.

**Vending Refunds** — These are available at the Keys Complex Desk between 8:00 am and 4:30 PM Monday through Friday. You must see the clerk on duty during the day for this service. In the event that you “lose” money in a machine during a different time period, come down to the desk when the clerk is on duty. Be sure to remember which machine was involved and any other important information such as the code or serial number on the machine.

**Ice Machine** — The ice machine is located in the vending area in the commons.

**Laundry Room** — There is one located in the commons. Both washers and dryers cost \$0.75.

**Bicycle Parking** — Park and lock your bicycles to the bike racks in the designated areas.

**RA on-call** — There is a RA on-call every Monday through Friday 5:00pm to 8:00am, and all day on Saturdays and Sundays. If you need a RA and cannot locate one, call or visit the Keys Complex Office at 392-8107.

**Housing Security** — If you need security assistance or simply want to report something suspicious, you may call Housing Security at 392-2495. There is a trained student with a two-way radio that patrols the Keys Complex and assists with the safety and security of the residents at night. This service is available from 10:00pm to 6:00am and has a link with the RA on-call in an effort to spot any problem situations such as propped doors or suspicious individuals.

## **Keys Residence Facility Rules and Regulations**

The following regulations will be in effect for the duration of the UF CPET program. It is requested that all UF CPET participants be thoroughly familiar with these regulations prior to arrival. These regulations, enforced by the University of Florida and/or the Housing Authority, are for the comfort and safety of the participants. Your cooperation is appreciated.

**ONLY UF CPET PARTICIPANTS MAY RESIDE IN THE RESIDENCE FACILITY:** No overnight or extended visits by friends or family are permitted. We will be happy to supply a list of conveniently located area hotels/motels.

**ENTRY TO RESIDENCE HALL ROOMS:** Each participant's right to privacy is a priority. No visitors or other participants are to be allowed access to a room unless at least one suite mate is present. The University of Florida housing staff members have pass keys, authorized for use in inspecting rooms, maintenance and supplying toilet paper. Housing staff members will knock first, prior to entering.

**ILLEGAL SUBSTANCES/ITEMS:** No participant may possess alcoholic beverages, firearms or other weapons, or substances regulated under the provisions of Chapter 893, Florida Statutes (controlled substances and "designer drugs") unless dispensed to the participant by prescription.

**DISORDERLY CONDUCT OR ACTION(S):** No participant should engage in disorderly and/or disruptive conduct, either on or off campus, while actively participating in the UF CPET program. Such conduct or any action that is committed with disregard to possible harm of one or more individuals, or that results in the injury of one or more individuals, will be reason for dismissal from the program.

**GENERAL CONDUCT:** If any participant should violate any rule of the University of Florida or the Board of Regents, or any law of the municipality, State of Florida or the United States, he/she will be asked to tender a resignation from active participation in the UF CPET program.

**OPEN FLAMES/SMOKING:** No smoking is permitted at any location in the building. No matches, candles, lighters, incense or open flames of any type are permitted in the apartment.

**NO ANIMALS:** The University of Florida Division of Housing rules prohibit pets of any kind.

**HOUSEKEEPING:** Participants in the UF CPET program should be aware that there is no housekeeping service provided, other than necessary maintenance procedures. It is expected that suite mates will share in cleaning duties, especially in shared facilities such as the kitchen and the bathroom.

**CHECK-IN/OUT:** This will be at the front desk of the Keys Residential Facility. It is a small building on the very east side of the complex. The desk is open 24 hours, so you may check-in at anytime. They will need to know you are with a UF CPET program (HHMI ICORE, SSI) and your name to issue you room keys.

## Directions for Keys Residence Housing

### From East Interstate 10/ I-75 South

- Follow 1-10 East until I-75 South
  - Take I-75 South until exit 287 (Oaks Mall exit)
  - Turn right at the light to go east on Newberry Ave (go under overpass once you exit I-75)
  - Follow Newberry Avenue 3-4 miles (Newberry Ave becomes University Ave)
  - Turn right onto Gale Lemerand Drive
  - Turn right onto Stadium Road
  - The Keys Residence Facility, ~1/8 mile on your left
  - Park in the Keys Residence Facility parking lot.
  - Check-in at the Keys Commons to receive your room key.
- The number to the Keys Residence Hall front desk is 392.8107.



### Useful information

Interactive campus map: <http://campusmap.ufl.edu/>

Keys Complex information: [http://www.housing.ufl.edu/facilities/resfac\\_singles\\_keys.html](http://www.housing.ufl.edu/facilities/resfac_singles_keys.html)

UF CPET: <http://www.cpet.ufl.edu/>

UF CPET Phone: 352.392.2310

Email: [julie@cpet.ufl.edu](mailto:julie@cpet.ufl.edu)

## Directions for Keys Residence Housing

### From the Northbound Florida Turnpike / I-75 North:

- Follow the Florida Turnpike North until it joins I-75
  - Take I-75 Northbound to Exit 284 (Archer Road)
  - Turn right onto Archer Road and travel ~3-4 miles
  - Turn left onto Gale Lemerand Drive
  - Turn left onto Museum Road
  - Turn right onto Woodlawn Drive
  - The Keys Residence Facility will be on your right, at the intersection of Stadium Rd.
  - Park in the Keys Residence Facility parking lot.
  - Check-in at the Keys Commons to receive your room key.
- The number to the Keys Residence Hall front desk is 392.8107.



### Useful information

Interactive campus map: <http://campusmap.ufl.edu/>

Keys Complex information: [http://www.housing.ufl.edu/facilities/resfac\\_singles\\_keys.html](http://www.housing.ufl.edu/facilities/resfac_singles_keys.html)

UF CPET: <http://www.cpet.ufl.edu/>

UF CPET Phone: 352.392.2310

Email: [julie@cpet.ufl.edu](mailto:julie@cpet.ufl.edu)